

# SYSTEM LT/ATS-102SZ

Thermally broken system for acm/mcm panels

## Installation procedure

Assembly of the aluminum composite panel is carried out with installing supporting profiles inside of the panel. Fastening of auxiliary profiles to the panel is carried out using rivets A/A2  $\varnothing 5$ . Installation of the starter profile to the vertical girt and fastening with rivets A/A2  $\varnothing 5$ . Installing a plastic clip. Installation of the pre-assembled panel of the lower row by installing the supporting profile shape S into profile shape Z. Aligning the panel. Permanent fixing of the panel through the supporting profile shape Z is carried out by rivets A/A2  $\varnothing 5$  to the vertical girt. Installation of subsequent rows is carried out in the same way.

# FEATURED ATTACHMENT BLOCKS



## ATS BLOCK

Backup Wall

- CMU
- Concrete
- Brick



## ATS HIGH BLOCK

Backup Wall

- Concrete slab

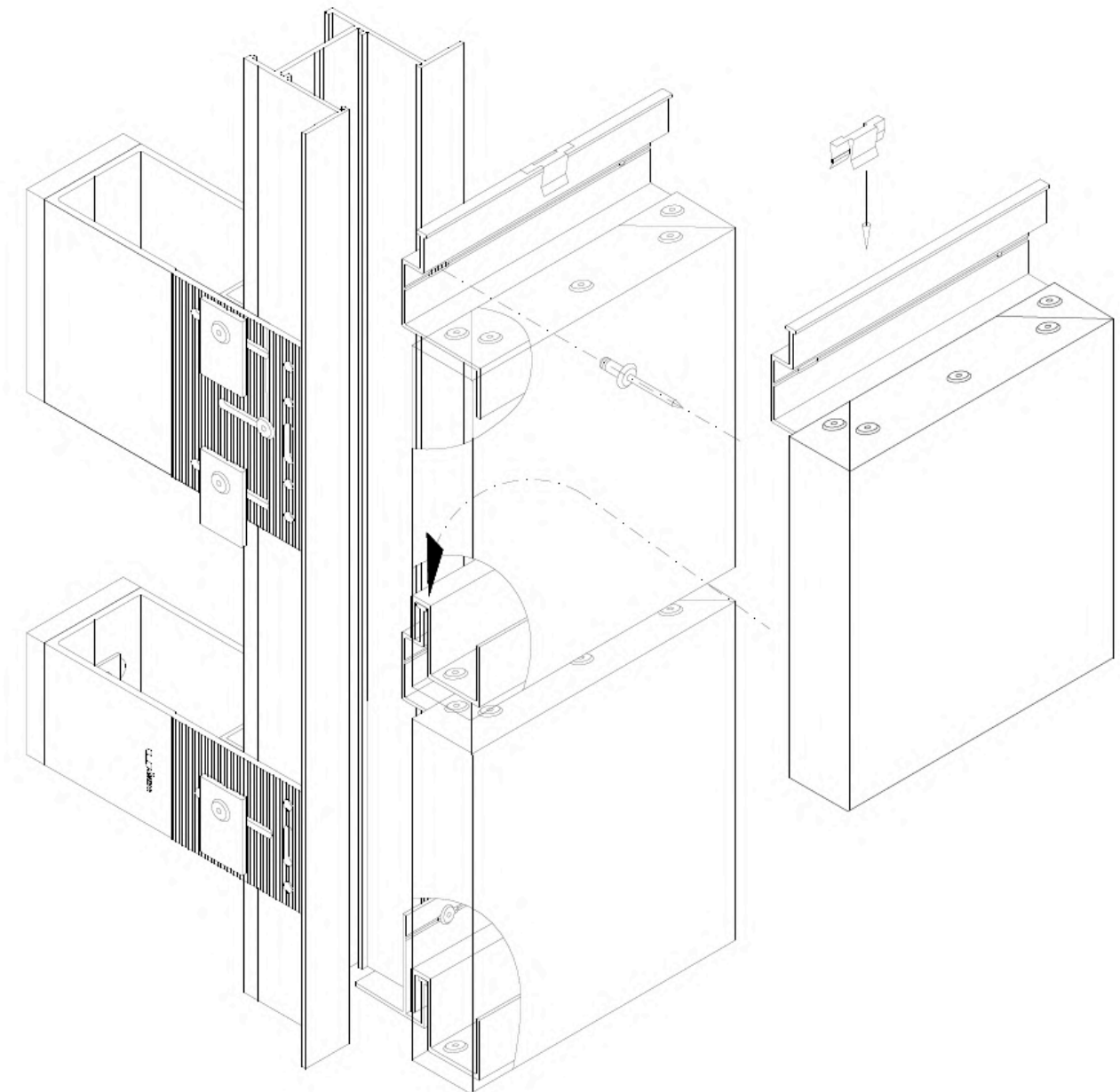


## LT BLOCK

Backup Wall

- Steel/Wood studs
- CMU
- Concrete
- Brick

# FEATURED ASSEMBLIES



# DETAILS

