



SYSTEM LT/ATS-325

Thermally broken system for mechanically attach stone panels

Installation procedure

Installation of bushings in pre-drilled holes on the upper and lower ends of the stone panels with a diameter of 8 mm and a depth of at least 38 mm. The holes are filled with sealant.

Installation on vertical girts of the starter brackets with pin and fastening with rivets $\varnothing 5$ A2/A2.

Installation of natural stone panels of the starting row.

Installing an regular bracket pin to fix the bottom panel

The next rows of panels are mounted in the same way using an regular bracket pin.

FEATURED ATTACHMENT BLOCKS



ATS BLOCK

Backup Wall

- CMU
- Concrete
- Brick



ATS HIGH BLOCK

Backup Wall

- Concrete slab

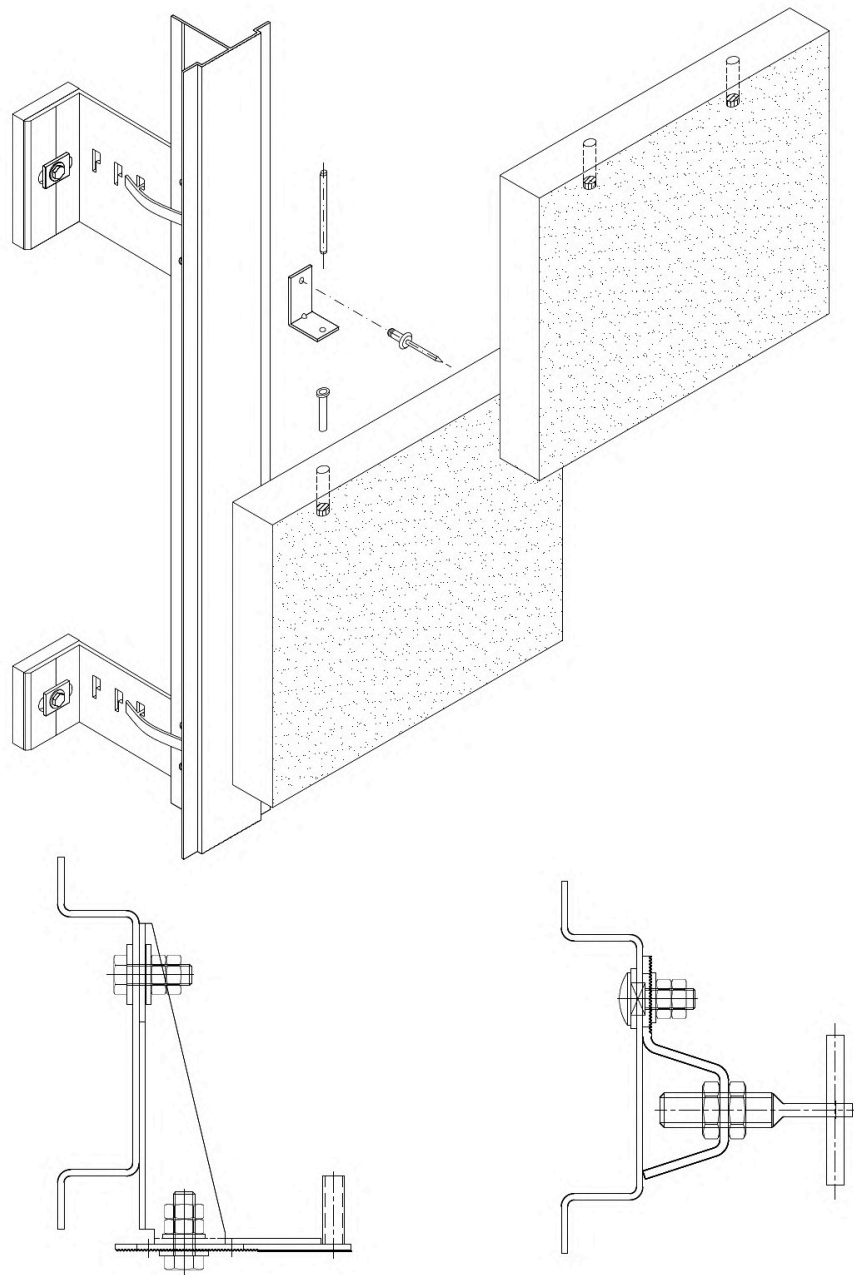


LT BLOCK

Backup Wall

- Steel/Wood studs
- CMU
- Concrete
- Brick

FEATURED ASSEMBLIES



DETAILS

